



GAT MONTHLY MEMBERSHIP PROGRESS REPORT

Results as of: 3/31/2022

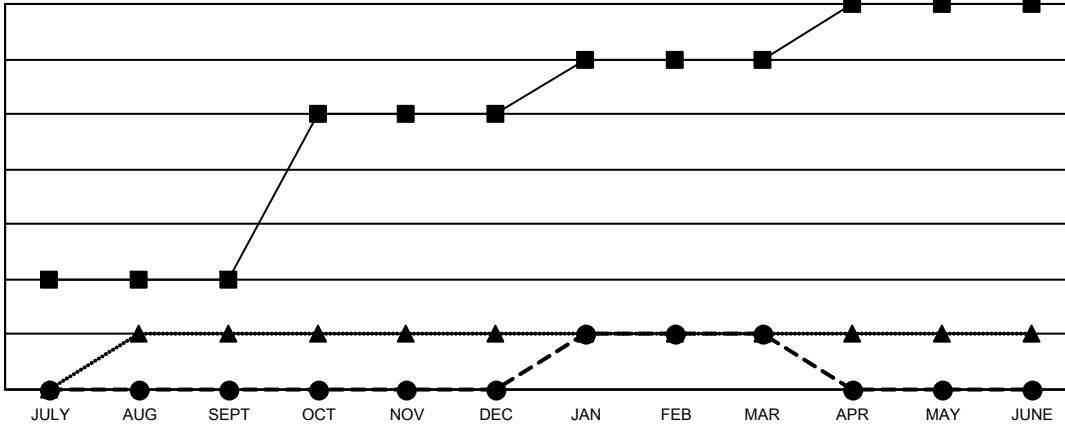
Multiple District 25

LOCATION: INDIANA

Clubs			
RESULTS FOR 2021-2022			
QUARTER	NEW CLUB GOAL	NEW CLUBS	DROPPED CLUBS
JULY/AUG/SEPT	2	0	6
OCT/NOV/DEC	3	0	6
JAN/FEB/MAR	1	1	2
APR/MAY/JUNE	1	0	0

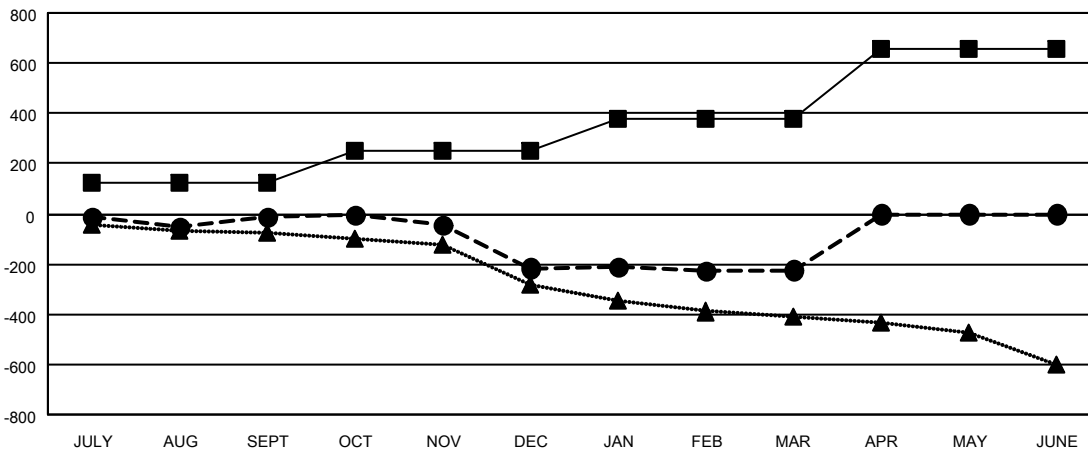
Members			
RESULTS FOR 2021-2022			
QUARTER	MEMBER GROWTH NET GOAL	MEMBER GROWTH ACTUAL	DROPPED MEMBERS ACTUAL (including transfers)
JULY/AUG/SEPT	125	243	213
OCT/NOV/DEC	126	170	367
JAN/FEB/MAR	127	239	195
APR/MAY/JUNE	279	0	0

GOALS AND ACTUAL NEW CLUBS CUMULATIVE



- CURRENT YEAR GOALS FOR NEW CLUBS
- CURRENT YEAR ACTUAL NEW CLUBS
- ▲- LAST YEAR ACTUAL NEW CLUBS

GOALS AND ACTUAL MEMBERS CUMULATIVE



- MEMBER GROWTH NET GOAL
- MEMBER GROWTH ACTUAL
- ▲- LAST YEAR MEMBERSHIP ACTUAL

DROPPED CLUBS: 14	172 CLUBS OF 356 ADDED 1 OR MORE NEW MEMBERS	GENDER DISTRIBUTION
DROPPED MEMBERS	CLICK HERE FOR CUMULATIVE MEMBERSHIP DATA	MALE 5,905 (68.47%)
DECEASED 154		FEMALE 2,719 (31.53%)
CLUB CANCELLED 127		NON BINARY 0 (0.00%)
OTHER 494		PREFER NOT TO ANSWER 0 (0.00%)
TOTAL 775		TOTAL FAMILY UNIT MEMBERS 2,117
		FAMILY MEMBERS PAYING HALF DUES 1,084